



GENERAL SPECIFICATION

		ACCOMMODATION		PROPULSION SYSTEM	
Port of Registry	: Astrakhan	16 x 1 Man Cabin	: 16	Main Engine (Wartsila)	: 2 x 4100 BHP, Diesel engine @
		4 x 2 Men Cabin	: 8		1000 rpm c/w Reduction gear
		Total POB : 24 Men		Propeller	: 2 x CPP@236mm/rpm speed
Flag	: Russia	Survivor Seating	: 125 Pax	Steering Gear	: 2 x Independent Electro. Hyd. Sys
Year Built	: 2015	Hospital Room	: 1 x Bed, 1 x Treatment Table	Bow Thruster	: 2 x CPP@700kW(Elect. Motor)
Hull No	: H385	Sanitary Room	: 8 x Bed	Stern Thruster	: 1 x CPP@700kW(Elect. Motor)
Builder	: Keppel Singmarine Pte. Ltd., Singapore	[FULLY AIR - C O N D I T I O N E D]		Bollard Pull	: 72.5 Tons (approx.) @ 100% MCR
Designer	: Marine Technology Development Pte. Ltd.			VESSEL SPEED	
Classification	: Russian Maritime Register of Shipping			Maximum Speed (100%)	: 14.6 Knots
Notation	: KM (*) ARCS, AUT1-ICS, DYNPOS-2, FF3WS, SUPPLY VESSEL			Service Speed (85%)	: 14.3 Knots
				Economical Speed (75%)	: 14.0 Knots

PRINCIPAL PARTICULARS		DECK EQUIPMENT		ELECTRIC POWER GENERATION	
Length Overall	: 81.11 m	Tugger Winch	: 2 x 200m x 25mm dia. wire	Main Generators	: 2 x 450ekW@380V/3Ph/50Hz
Breadth Moulded	: 16.50 m	Capstan	: 2 x 10 Tons x 0~15m/min	Emergency/ Harbor Generators	: 1 x 350ekW@380V/3Ph/50Hz
Depth Moulded	: 6.20 m	Deck Crane (Fixed Boom)	: 1 x 12 Tons (SWL) @10m radius	Shaft Alternators	: 2 x 1600ekW@380V/3Ph/50Hz
Summer Draft	: 4.20 m	Accommodation Ladder	: 2 x 6.7m(L) x 0.6m(W) c/w safety net (Elect. Driven)		
Gross Tonnage	: 2893			DYNAMIC POSITIONNING SYSTEM	
Net Tonnage	: 868	ANCHOR MOORING SYSTEM		DP-2 System	: 1 set
Deadweight	: 1177 Tons (approx.)	Anchor Type	: High Holding Power Anchor	Maker	: Kongsberg
Free Deck Space	: 420 m ² (approx.)	Anchor Capacity	: 2 x 1760kg @ 410T		
Deck Cargo Capacity	: 500 Tons	Anchor Chains	: 2 x 632.5mL @ (27.5m/shackle)		
Deck Strength	: 5 Tons/m ²	Spare Anchor	: 1 x 1750kg @ 408kN proof load		

SAFETY EQUIPMENT		TOWING & ANCHOR HANDLING WINCH		NAVIGATION & COMMUNICATION EQUIPMENT	
Liferafts	: 12 x 35men, 2 x 25men	Anchor Handling and	: Duoble drum, Waterfall type	GMDSS (Area A1,A2,A3)	: 1 complete set
Rescue Boat	: 2 x 15men FRB c/w pivoting davit	Towing Winch	(Electro. Hyd. Sys)	DGPS	: 2 units
Sramble Net	: 2 set	- Brake Holding Capacity	: 200 Tons @ 1st layer (static)	Gyro Compass	: 3 units
Dacoon scoop net	: 1 set	- Drum Capacity	: 1 x 1000m x 58mm dia.Wire	Satellite Compass	: 1 set
Rescue basket	: 1 set c/w power davit	- Winch Load Capacity	: 120 Tons @ 8m/min. at 1 st layer	Magnetic Compass	: 1 set
Remarks: Vessel safety equipment & Firemen's outfits are accordance to FF3WS, SOLAS & Flag State requirement					
FIRE FIGHTING & ANTI POLLUTION EQUIPMENT		Storage Drum Capacity	: 1 x 1000m x 58mm dia. wire	Radar (ARPA)	: 2 units (1 x S-Band, 1 x X-Band)
FiFi Classification	: FF3WS	- Rated Pull	: 5 Tons x 0~30m/min. at 1 st layer	BNWAS	: 1 set
Fire Pumps Capacity	: 2 x 1600m ³ /hr	- Brake Holding	: 10 Tons at 1 st layer (static)	Echo Sounder	: 1 unit
Fire Monitor Capacity	: 1200m ³ /hr water & 300m ³ /hr foam	Towing Pin / Kamfork	: 2 x 160 Tons/ 300 Tons BP (SWL)	Speed Log	: 1 unit
Oil Dispersant System	: 2 x 10m Dispersant Boom	Stern Roller	: 3.50m(L) x 1.6m dia.@200T(SWL)	Navtex Receiver	: 1 unit
Oil Recovery System	: 1 set c/w power davit				
Remarks: Machinery spaces, accommodation spaces and cabins are fitted with heat, smoke, fire detector and complied with SOLAS requirement.					

DW/ BW Tanks (m ³)			Fuel Oil Tanks (m ³)			Cargo Fresh Water Tanks (m ³)			Recovered Fuel Oil Tanks (m ³)			Cargo Sewage Tanks (m ³)			Hydro Oil Tanks (m ³)		
1	TK1.C	34.00	1	TK1.C	35.30	1	TK1.P	59.00	1	RO1.P	107.20	1	TK1.P	36.05	1	TK.S	9.30
2	TK2.P	98.60	2	TK1.P	83.50	2	TK1.S	59.00	2	RO1.S	107.20	2	TK1.S	36.05	TOTAL: 9.30		
3	TK2.S	98.60	3	TK1.S	83.50	3	TK.2C	90.20	3	RO2.P	135.30	3	TK.2S	112.30	TOTAL: 184.40		
4	TK3.P	85.50	4	TK2.C	67.30	TOTAL: 208.20			TOTAL: 485.00						Sludge Tanks (m ³)		
5	TK3.S	83.80	5	TK3.P	89.70	Potable Fresh Water Tanks (m ³)			Lube Oil Tanks (m ³)			Sewage Tanks (m ³)			1	TK.P	21.80
6	TK4.P	90.20	6	TK3.S	89.70	1	TK1.C	118.00	1	TK.P	13.95	1	TK1.C	30.25	TOTAL: 21.80		
7	TK4.S	90.20	7	DAY_TK.P	19.10	2	TK2.P	46.60	2	TK.S	13.95	2	TK2.C	112.25	TOTAL: 142.50		
8	TK5.P	47.80	8	DAY_TK.S	25.40	3	TK2.S	46.60	TOTAL: 27.90						Dispersant Tanks (m ³)		
9	TK5.S	47.80	9	SETT_TK.P	46.50	TOTAL: 211.20			Dirty Oil Tanks (m ³)			Bilge Holding Tanks (m ³)			1	TK.P	9.40
10	TK6.P	54.70	10	SETT_TK.S	49.50	Technical Fresh Water Tanks (m ³)			1	TK.S	21.80	1	Clean_BLG.P	21.90	Foam Tanks (m ³)		
11	TK6.S	54.70	11	CLEAN_TK.P	2.50	1	TK1.C	279.30	TOTAL: 21.80			2	Oily_BLG.S	21.90	1	TK.S	9.40
TOTAL: 785.90			12	EM_TK.P	3.10	TOTAL: 279.30						TOTAL: 43.80			TOTAL: 9.40		
			TOTAL: 595.10												ALL TANKS (m ³) @ 100%		
															TOTAL: 3035.00		



GENERAL ARRANGEMENT

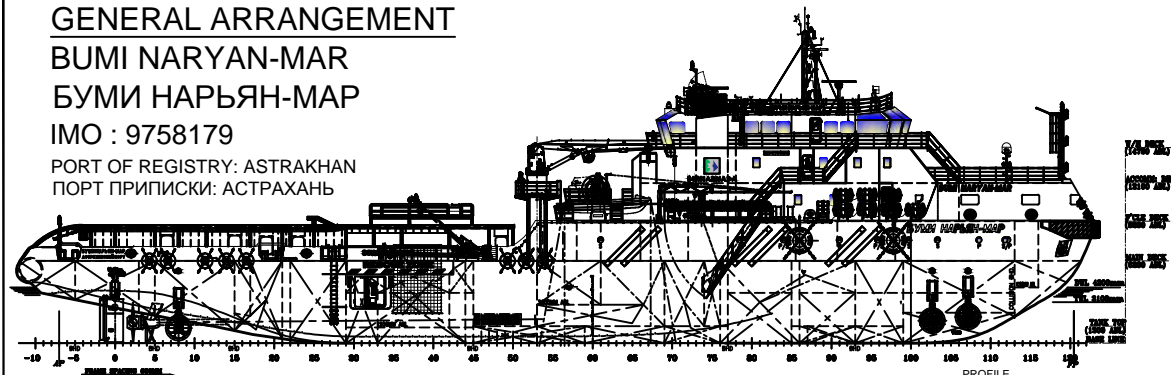
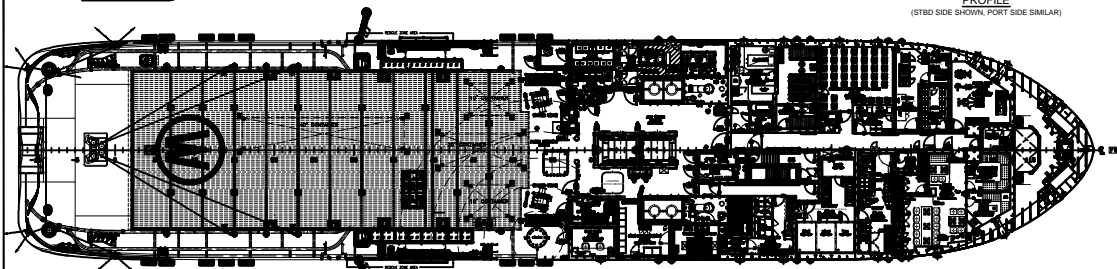
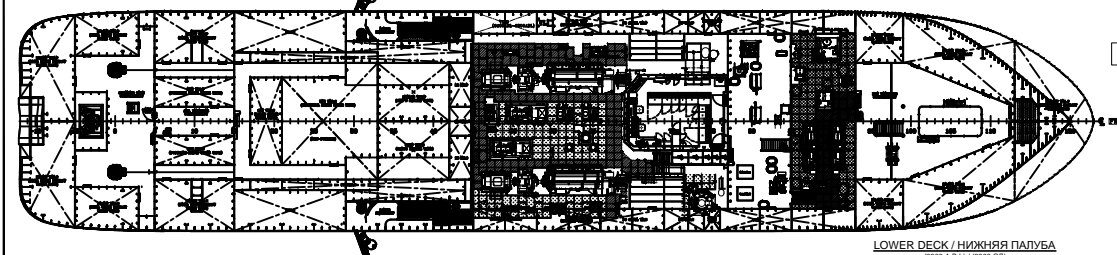
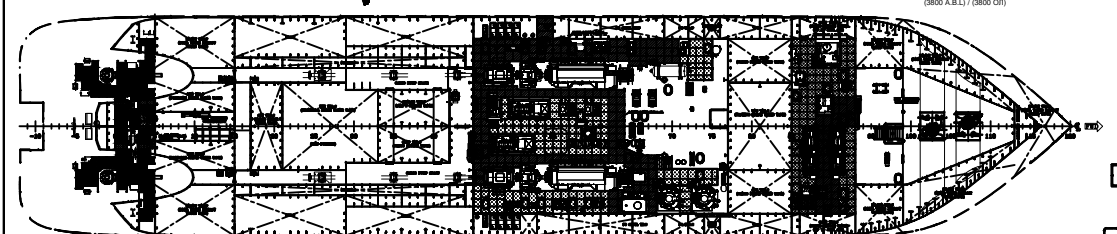
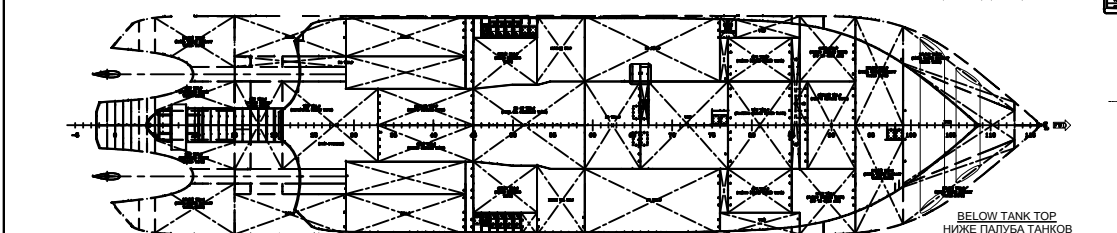
BUMI NARYAN-MAR

БУМИ НАРЬЯН-МАР

IMO : 9758179

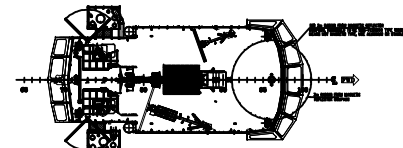
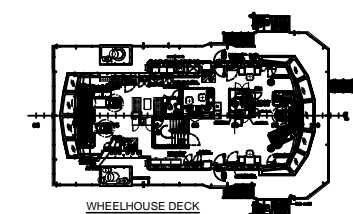
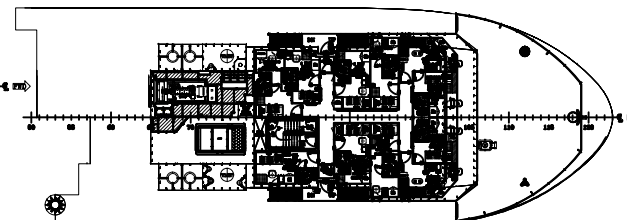
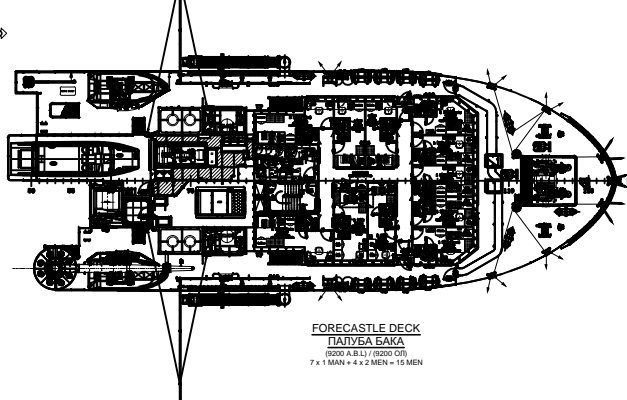
PORT OF REGISTRY: ASTRAKHAN

ПОРТ ПРИПИСКИ: АСТРАХАНЬ

PROFILE
(STARBOARD SHOWN, PORT SIDE SIMILAR)MAIN DECK / ГЛАВНАЯ ПАЛУБА
(6200 A.B.L.) / (6200 OI)LOWER DECK / НИЖНЯЯ ПАЛУБА
(3800 A.B.L.) / (3800 OI)TANK TOP / ПАЛУБА ТАНКОВ
(1300 A.B.L.) / (1300 OI)BELOW TANK TOP
НИЖЕ ПАЛУБА ТАНКОВ
(1000 A.B.L.) / (1000 OI)

PARTICULARS:	
LENGTH OVERALL	81.11 METERS
LENGTH WATERLINE	76.36 METERS
BEAM (MOULDED)	16.50 METERS
DEPTH (MOULDED)	6.20 METERS
DRAFT (SUMMER)	4.20 METERS
DRAFT (TRANSIT)	3.10 METERS
COMPLEMENT:	
CREW	24 MEN

ОСОБЕННОСТИ:	
ГАБАРИТНАЯ ДЛИНА	81.11 МЕТРОВ
ДЛИНА ПО ВОДЕРЛИНИ	76.36 МЕТРОВ
ШИРИНА (ОБРАЗОВАНИЕ)	16.50 МЕТРОВ
ГЛУБИНА (ОБРАЗОВАНИЕ)	6.20 МЕТРОВ
ПРОЕКТ (ЛЕТО)	4.20 МЕТРОВ
ПРОЕКТ (ТРАНСИТ)	3.10 МЕТРОВ
ДОПОЛНЕНИЕ:	
ЭКИПАЖ	24 чел

WHEELHOUSE TOP
ПАЛУБА ВЕРХНЕГО МОСТКА
(17250 A.B.L.) / (17250 OI)WHEELHOUSE DECK
ПАЛУБА РУЛЕВОЙ РУБКИ
(14750 A.B.L.) / (14750 OI)ACCOMMODATION DECK
ПАЛУБА РУЛЕВОЙ РУБКИ
(12100 A.B.L.) / (12100 OI)
9 x 1 MAN = 9 MENFORECASTLE DECK
ПАЛУБА БАКА
(6000 A.B.L.) / (6000 OI)
7 x 1 MAN + 4 x 2 MEN = 15 MEN

ALTERATIONS

REV.	AMENDMENT DETAILS	DATE	BY	PCN	APP.
0	AS-BUILT	07/09/2015	HERNIE		

REFERENCE PLANS

REF.	DWG/DOC NO	DRAWING/DOCUMENT TITLE	BY
1	MTD P228-D100	GENERAL ARRANGEMENT (REV 1)	MTD

This document and the information which it contains are confidential and are the property of Keppel Singmarine Pte Ltd. It is loaned to you for the limited purpose of assisting you with operation and maintenance of the equipment which you have purchased from Keppel Singmarine. It remains the property of Keppel Singmarine. It may not be reproduced in whole or in part without Keppel Singmarine prior written consent. It may not be disclosed to persons not having need of disclosure for the loan and it is to be returned to Keppel Singmarine upon completion of the use for which it was loaned.

PRINT RECORD

C : CONSTRUCTION	I : INFORMATION	A : APPROVAL
NO PRINTED		
DATE PRINTED		
ALTERATION		
OWNER (BUMI ARMADA)		
CLASS (RMRS)		
PROJECT MANAGER		
PROJECT SUPT.		
PRODN. (HULL)		
PRODN. (OUTFIT)		
PRODN. (ACCOM)		
PRODN. (MECHANICAL)		
PRODN. (PIPING)		
PRODN. (ELECTRICAL)		
PLANNING DEPT.		
PURCHASING DEPT.		
G.A. DEPT.		
ENGINEERING DEPT.:		
HULL/OUTFIT		
MECHANICAL/PIPING		
ELECTRICAL		
PROJECT ENGINEER		
VENDOR		
CONSULTANT		

APPROVED BY : OWNER (BUMI ARMADA)
CLASS (RMRS)

DATE:
11/07/2014

25/06/2014 (WITH COMMENTS)

KM/ARC5, AUT1-ICS, DYNPOS-2, FF3WS, SUPPLY VESSEL

Keppel Singmarine

Keppel Singmarine Pte Ltd
15 Benoi Road
Singapore 629888
Tel: (65) 6861 6622
Fax: (65) 6860 2863

Date:	24th FEB 2015	Scale:	1:200 @A1
Designed By:	KSM	Hull No.:	H385
Drawn:	HERNIE	Eng. Proj. No.:	H385
Checked:	PHILIP KOH	Basic Design Appr'd:	PHILIP KOH
Job:	MULTI-PURPOSE DUTY RESCUE VESSEL		
Title:	GENERAL ARRANGEMENT		
Drawing No:	H385-D100 (AS-BUILT)	Rev.	0
Sheet 1 Of 1 Sheets			